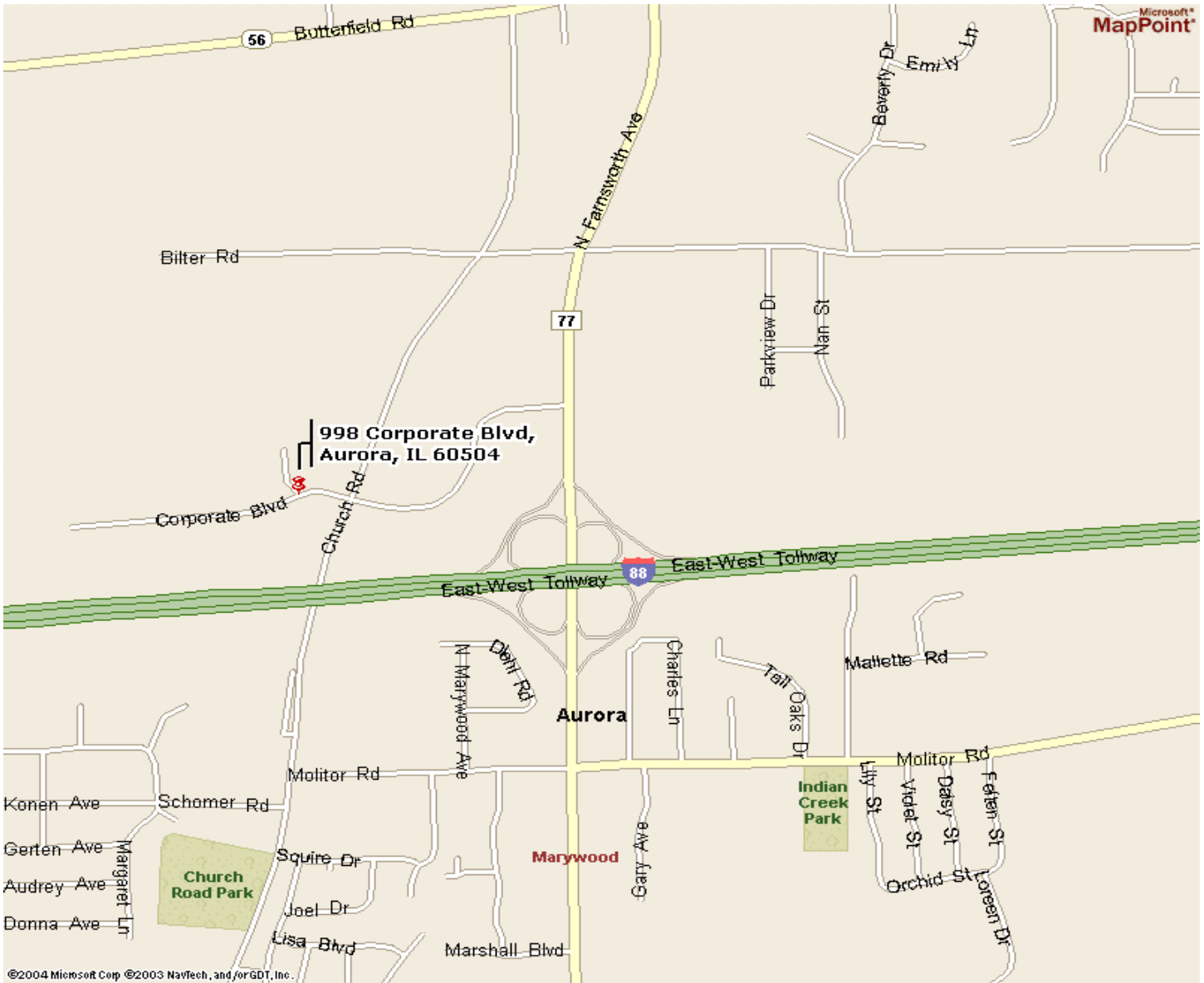


**Directions to Sikich Group  
998 Corporate Blvd., Aurora, IL 60504**



**From Chicago and East: I-290 (Eisenhower Expressway) to I-88 (East/West) Tollway. Take I-88 West to Aurora. Take North Farnsworth Ave. Exit. Take an immediate left turn on service road (Corporate Blvd.) Go West to 998 Corporate Blvd. Building is at corner of Church and Corporate. (If you miss this turn, you can take the next left at Biliter Road to Church and then south on Church)**

**From Aurora and West: I-88 - Take North Farnsworth Ave. Exit. Take an immediate left turn on service road (Corporate Blvd.) Go West to 998 Corporate Blvd. Building is at corner of Church and Corporate. (If you miss this turn, you can take the next left at Biliter Road to Church and then south on Church)**

**From O'Hare and North: I-190 to exit 1D I-294 South to I-88 (East/West) Tollway (about 9 miles). Take I-88 West to Aurora. Take North Farnsworth Ave. Take an immediate left turn on service road (Corporate Blvd.) Go West to 998 Corporate Blvd. Building is at corner of Church and Corporate. (If you miss this turn, you can take the next left at Biliter Road to Church and then south on Church)**

**From Indiana and South: I-294 North to I-88 (East/West) Tollway. Take I-88 West to Aurora. Take North Farnsworth Ave. Exit. Take an immediate left turn on service road (Corporate Blvd.) Go West to 998 Corporate Blvd. Building is at corner of Church and Corporate. (If you miss this turn, you can take the next left at Biliter Road to Church and then south on Church)**

**From Joliet & Southwest: I-55 North to I-355 North to I-355 North to I-88 West to Aurora. Take North Farnsworth Ave. Take an immediate left turn on service road (Corporate Blvd.) Go West to 998 Corporate Blvd. Building is at corner of Church and Corporate. (If you miss this turn, you can take the next left at Biliter Road to Church and then south on Church)**